

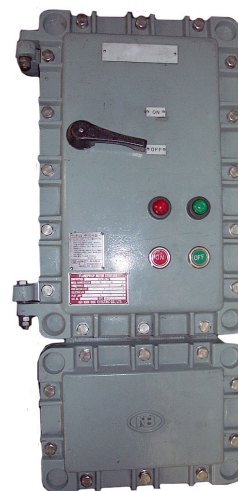
Circuit Breaker Box & Motor Starter ECM Series

Wet Locations
NEMA 3,3R,4,4X,7,9

❖ Type of Explosion-proof
Flameproof (Ex d IIB T6)
Dust Ignition-proof (Ex DP II 13)

❖ Application

- These units contain an effective magnetic motor starter conforming to the specific standards in the flameproof main enclosures of the rectangular shape.
- The magnetic motor starters interior are manual resetting and are wired for remote control as standard. The standard units are Through Patterns having terminal boxes at top and bottom, and a push button for resetting is mounted on the cover of the main enclosures. Alternatively Terminal Pattern units having a bus-bar housing at top and a terminal box at bottom can be supplied on request. Accessories listed in the table can be furnished to customers' requirements.



Enclosure Size	Dimensions (mm)								Max. Conduit Size	Max. Conduit Size mm ²
	A	B	C	D	E	F	G	H		
SS	250	350	200	550	750	270	280	190	42(1-1/2")×2	14
MS	320	540	250	790	1040	330	440	220	42(1-1/2")×2	14
LS	500	510	310	820	1130	550	450	255	54(2")×2	38
EL	500	750	305	1055	1360	550	690	270	70(2-1/2")×2	100

* SS : Small Size, MS : Middle Size, LS : Large Size, EL : Extra Large

❖ Features

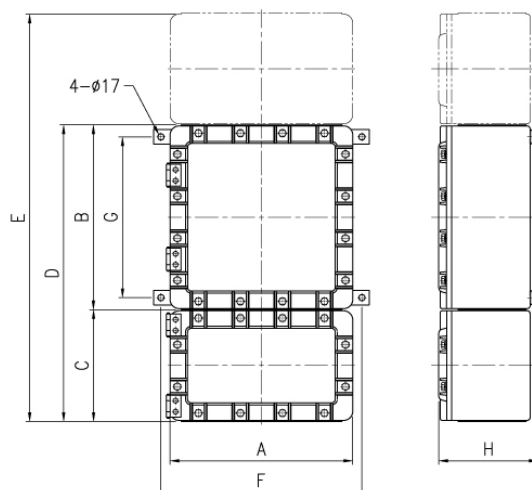
- The bodies of the main enclosure and terminal boxes are accurately machined to rectangular shape, and each of them and their covers are closely fitted with plain flanged joints.
- The operating mechanisms for the resetting button of magnetic motor starter interior, push button and selector switch are secure and smooth. The operating rods are machined to the required tolerances, and an O-ring and rubber caps are provided for preventing water and dust coming into the joints. The leading of conductors through the barrier wall is flame-proof stud type for main circuit and flameproof sealing type for control circuits.

❖ Standard Materials

- Main Enclosure : Cast aluminium alloy
- Terminal Box : Cast aluminium alloy

❖ Standard Finish

- MUNSELL No. 7.5BG 6/1.5
- If you want another color, contact us please.



❖ Details of Motor Starters Interior

Rate	Catalog No.	Size	Electric Motor			Terminal Block	Standard Unit					Sequence
			Rated Capacity (KW)	Total Load Current (A)			Push Button		Pilot Lamp		Timer	
				220V	440V	Main	On	Off	Red	Green		
220V	ECM-7.5LS	SS	0.05 ~ 7.5	1.2 ~ 22	—	5.5 SQ×6P	○	○	○	○	—	A
220V /440V	ECM-15LS	SS	7.5 ~ 15	28 ~ 55	14 ~ 28	22 SQ×6P	○	○	○	○	—	A
	ECM-15RS	MS	7.5 ~ 15	28 ~ 55	14 ~ 28	22 SQ×6P	○	○	○	○	—	B
	ECM-15SD	MS	7.5 ~ 15	28 ~ 55	14 ~ 28	22 SQ×6P	○	○	○	○	○	C
	ECM-37LS	MS	19 ~ 37	70 ~ 130	35 ~ 65	100 SQ×6P	○	○	○	○	—	A
	ECM-37RS	MS	19 ~ 37	70 ~ 130	35 ~ 65	100 SQ×6P	○	○	○	○	—	B
	ECM-37SD	MS	19 ~ 37	70 ~ 130	35 ~ 65	100 SQ×6P	○	○	○	○	○	C
	ECM-75LS	LS	45 ~ 75	160 ~ 253	80 ~ 126	150 SQ×6P	○	○	○	○	—	A
	ECM-75RS	LS	45 ~ 75	160 ~ 253	80 ~ 126	150 SQ×6P	○	○	○	○	—	B
	ECM-75SD	LS	45 ~ 75	160 ~ 253	80 ~ 126	150 SQ×6P	○	○	○	○	○	C
440V	ECM-132LS	EL	90 ~ 132	305 ~ 440	150 ~ 220	200 SQ×6P	○	○	○	○	—	A
	ECM-132RS	EL	90 ~ 132	305 ~ 440	150 ~ 220	200 SQ×6P	○	○	○	○	—	B
	ECM-132SD	EL	90 ~ 132	305 ~ 440	150 ~ 220	200 SQ×6P	○	○	○	○	○	C

* LS : Line Starter

* No of terminal block in control line is on request.

RS : Reversible Starter

* Frequency of magnetic contactor coil is 60Hz. (50Hz is on request)

SD : Star-Delta Starter

❖ Optional Accessories

a : Illuminator PB

g : Hand Reset Relay

b : Aux Relay

h : Automatic Reset Relay

c : Earth Leakage Breaker

i : Electromagnetic Contactor

d : Potential Transformer & Fuse

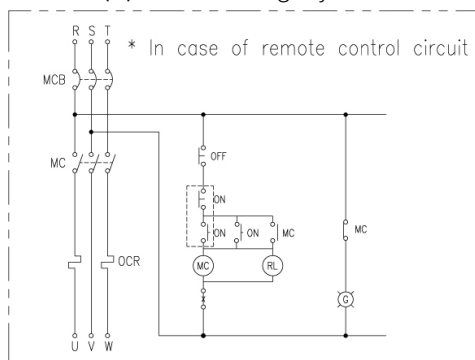
j : Yellow Pilot Lamp

e : Emergency Button S/W

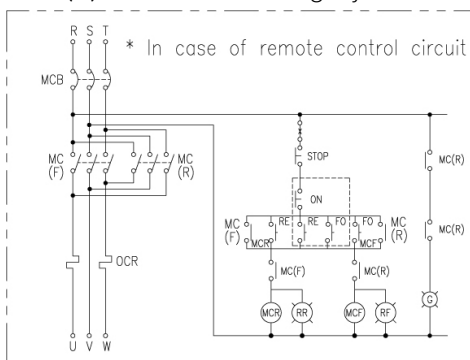
k : Ampere Meter

f : Over Current Relay

(A) Line Starting System



(B) Reversible Starting System



(C) Y-Δ Starting System

