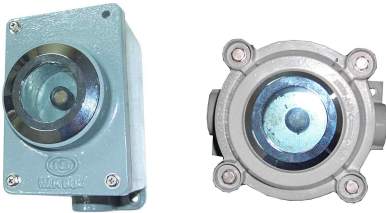


Photocell Switch EPC Series

❖ Type of Explosion-proof

Flameproof (Ex d IIB+H2 T6 Gb IP65)
 Flameproof (Ex db IIC T6 Gb IP65)
 Dustproof (Ex tb IIIC T85°C Db IP66)



❖ Application

The EPC remote Photocell is:

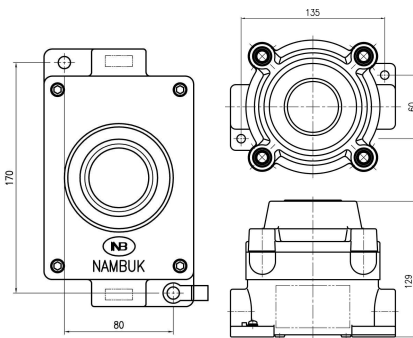
- Used to provide dusk-to-dawn operation of lighting fixtures.
- Used to control lighting circuits in remote locations.
- Ideal for walkways, bridges, security lighting, industrial platforms, etc.

❖ Standard Materials

- Back Box : Cast aluminum alloy
- Cover : Cast aluminum alloy

❖ Standard Finish

- MUNSSELL No. 7.5BG 6/1.5
- If you want another color, contact us please.



❖ Technical Data

| Model | EPC | EPC/C |
|-----------------|---|---|
| Ex. Grade | Ex d IIB+H2 T6 Gb EX tb IIIC T85°C Db IP65 | Ex db IIC T6 Gb Ex tb IIIC T85°C Db IP66 |
| Electrical Data | Max. 250Vac | 105 ~ 305 Vac Max. 6A |
| Certificate No. | IECEX KTL 13.0016 INERIS 14 ATEX 0016X | IECEX KTL 17.0002X INERIS 20 ATEX 0032X |
| Operation | On: 50 Lux, Off: 150 Lux | |

Photocell Switch VPC Series



❖ Application

The VPC 50 remote Photocell is:

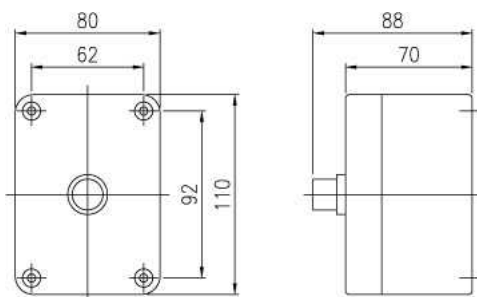
- Used to provide dusk-to-dawn operation of lighting fixtures.
- Used to control lighting circuits in remote locations.
- Ideal for walkways, bridges, security lighting, industrial platforms, etc.

❖ Standard Materials

- Back Box : PC/ABS
- Cover : PC/ABS

❖ Standard Finish

- Natural



❖ Technical Data

| | |
|----------------|---------------------------------|
| Input Volt | 100~120V, 200~220V |
| Frequency | 60Hz |
| Contact Rating | AC 120V 10A AC 208~277V 5.8A |
| Operation | On: 50 Lux, Off: 150 Lux |
| Model | VPC 50 |