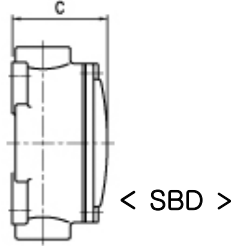


Increase Safety Junction Boxes SBD Series

❖ Type of Explosion-proof
Increase Safety (Ex e II)



Conduit Size		Dimension			
		A	B	C	D
16	1/2"	127	89	62	115
22	3/4"	127	89	62	115
28	1"	141	89	66	122
36	1 1/4"	170	106	90	148
42	1 1/2"	170	106	90	148
54	2"	204	124	120	182

❖ Application

SBD junction boxes are used ;

- in originally designed for humid or dusty locations.
- together with the SD Elbows shown on page because of their higher quality on strength, dustproof and weatherproof.
- they are used securely for conduit wiring in Division 2 hazardous areas.
- in select the proper entry position and size of box in accordance with the location and the use.

❖ Features

- These boxes of conduit sized 16(1/2"), 22(3/4"), and 28(1") can be used for the mounting box of increased safety SYL Incandescent and SYFL Fluorescent Lighting Fittings, and vapour-tight VDY Incandescent Lighting Fittings.

❖ Standard Materials

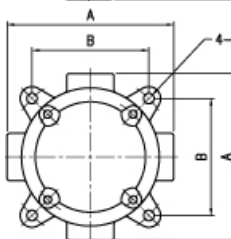
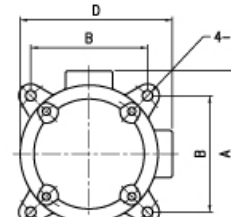
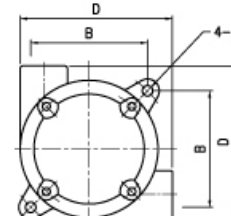
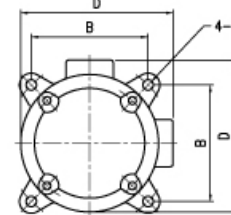
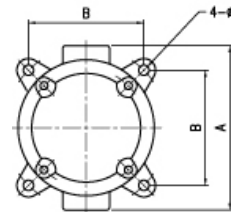
- Cast Iron
- Cast Aluminium

❖ Standard Finish

- Hot Dip Galvanized with stove enamelled
- Cast Al : MUNSELL No. 7.5BG 6/1.5
- If you want another color, contact us please.

❖ Ordering Number

<Dimension>



Entries	Conduit Size		Catalog Number	Weight (kg)
			Flat Cover	
Terminal	16	1/2"	SBD1016	1.8
	22	3/4"	SBD1022	1.8
	28	1"	SBD1028	2.0
	36	1-1/4"	SBD1036	3.5
	42	1-1/2"	SBD1042	3.9
	54	2"	SBD1054	5.5
Through-Way	16	1/2"	SBD2116	1.8
	22	3/4"	SBD2122	1.8
	28	1"	SBD2128	2.0
	36	1-1/4"	SBD2136	3.4
	42	1-1/2"	SBD2142	3.8
Angle	16	1/2"	SBD2216	1.7
	22	3/4"	SBD2222	1.7
	28	1"	SBD2228	1.9
	36	1-1/4"	SBD2236	3.3
	42	1-1/2"	SBD2242	3.6
Three-Way	16	1/2"	SBD3016	1.8
	22	3/4"	SBD3022	1.8
	28	1"	SBD3028	2.0
	36	1-1/4"	SBD3036	3.5
	42	1-1/2"	SBD3042	3.9
Four-Way	16	1/2"	SBD4022	1.7
	22	3/4"	SBD4028	1.7
	28	1"	SBD4036	1.9
	36	1-1/4"	SBD4042	3.4
	42	1-1/2"	SBD4054	3.7
	54	2"	SBD4054	5.3

❖ Compliance

- IEC 60079-0, 7

❖ Certification

- Certified by KOSHA (Korea Occupational Safety & Health Agency), KGS (Korea Gas Safety Corporation), and the others.

⇒ If you need more information, contact us please.