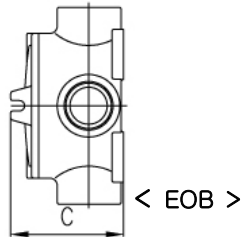


Flameproof Junction Boxes EOB Series



❖ Type of Explosion-proof

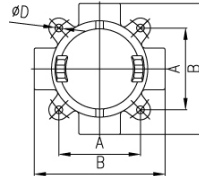
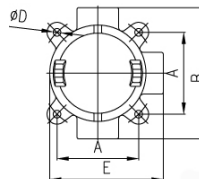
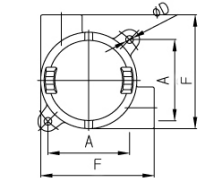
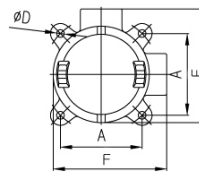
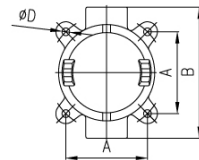
Flameproof (Ex d IIC)
Class I Group C,D Class II Group E,F,G



❖ Ordering Number

Conduit Size	Dimension					
	A	B	C	D	E	F
16 1/2"	85	132	79	8	116	116
22 3/4"	85	132	82	8	116	116
28 1"	85	142	86	8	121	121
36 1-1/4"	106	170	96	10	148	148
42 1-1/2"	106	170	102	10	148	148
54 2"	142	234	164	10	198	198

<Dimension>



Entry	Conduit Size	Catalog Number		Weight (kg)
		Flat Cover	Dome Cover	
Terminal	16 1/2"	EOB1016	EOBD1016	1.8
	22 3/4"	EOB1022	EOBD1022	1.8
	28 1"	EOB1028	EOBD1028	2.0
	36 1-1/4"	EOB1036	EOBD1036	3.5
	42 1-1/2"	EOB1042	EOBD1042	3.9
	54 2"	EOB1054	EOBD1054	5.5
Through-Way	16 1/2"	EOB2116	EOBD2116	1.8
	22 3/4"	EOB2122	EOBD2122	1.8
	28 1"	EOB2128	EOBD2128	2.0
	36 1-1/4"	EOB2136	EOBD2136	3.4
	42 1-1/2"	EOB2142	EOBD2142	3.8
	54 2"	EOB2154	EOBD2154	5.4
Angle	16 1/2"	EOB2216	EOBD2216	1.7
	22 3/4"	EOB2222	EOBD2222	1.7
	28 1"	EOB2228	EOBD2228	1.9
	36 1-1/4"	EOB2236	EOBD2236	3.3
	42 1-1/2"	EOB2242	EOBD2242	3.6
	54 2"	EOB2254	EOBD2254	5.2
Three-Way	16 1/2"	EOB3016	EOBD3016	1.8
	22 3/4"	EOB3022	EOBD3022	1.8
	28 1"	EOB3028	EOBD3028	2.0
	36 1-1/4"	EOB3036	EOBD3036	3.5
	42 1-1/2"	EOB3042	EOBD3042	3.9
	54 2"	EOB3054	EOBD3054	5.5
Four-Way	16 1/2"	EOB4022	EOBD4022	1.7
	22 3/4"	EOB4028	EOBD4028	1.7
	28 1"	EOB4036	EOBD4036	1.9
	36 1-1/4"	EOB4042	EOBD4042	3.4
	42 1-1/2"	EOB4054	EOBD4054	3.7
	54 2"	EOB4054	EOBD4054	5.3

❖ Application

EOB junction boxes are used :

- in indispensable for splicing and branching of conductors for electrical wiring in explosive gas atmosphere.
- in various products in accordance with applicable conduit sizes and positions of entries are supplied as standard.
- in select suitable type and dimensions according to the location.

❖ Features

The cover is ;

- Thread-jointed to the body
- Synthetic rubber O-ring is used outside of the joint.
- Assured flameproof, weatherproof and dust-tight are obtained.
- When the connections of conductors are bulky or the treatment of wiring is difficult.
- Recommend to use the EOBD Junction Boxes with dome cover.

❖ Standard Materials

- Cast Iron
- If you want another color, contact us please.

❖ Standard Finish

- Cast Iron : Hot Dip Galvanized with stove enamelled
- Cast Al : MUNSELL No. 7.5BG 6/1.5
- If you want another color, contact us please.

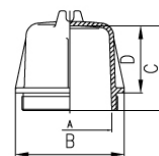
❖ Compliance

- IEC 60079-0, 1
- ANSI/UL 886
- ANSI/UL 514A

❖ Certification

- Certified by KOSHA (Korea Occupational Safety & Health Agency), KGS (Korea Gas Safety Corporation), and the others.

❖ Dome Cover



- The dome cover can be fitted with the splices of conductors standing as shown in the photograph.
- Splicings and treatments of many conductors can easily be done without suffering damages in the boxes.